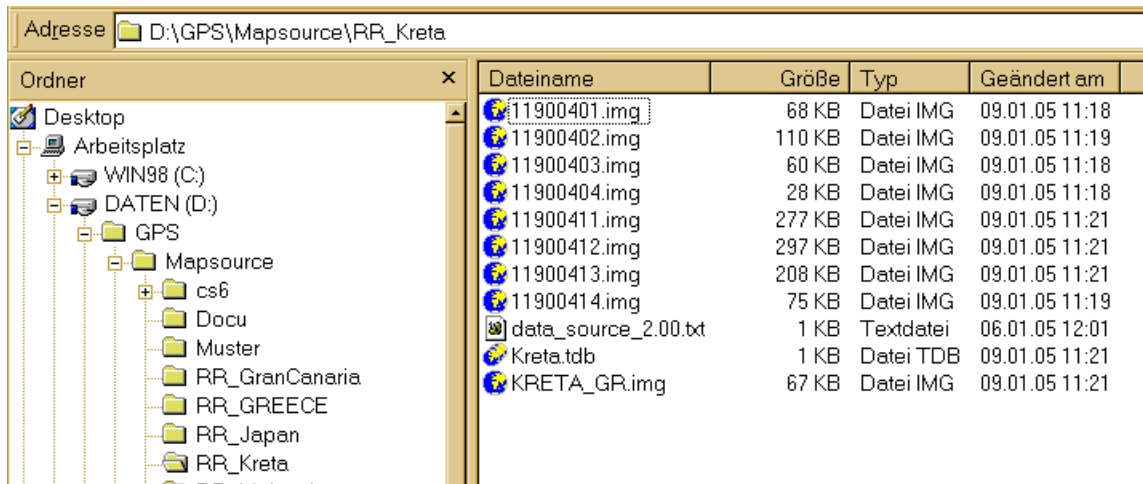


How to register a finished project on a new location:

1.) After download the project (e.g. **116_RR_Kreta.zip**), place all the files in a **target folder**.

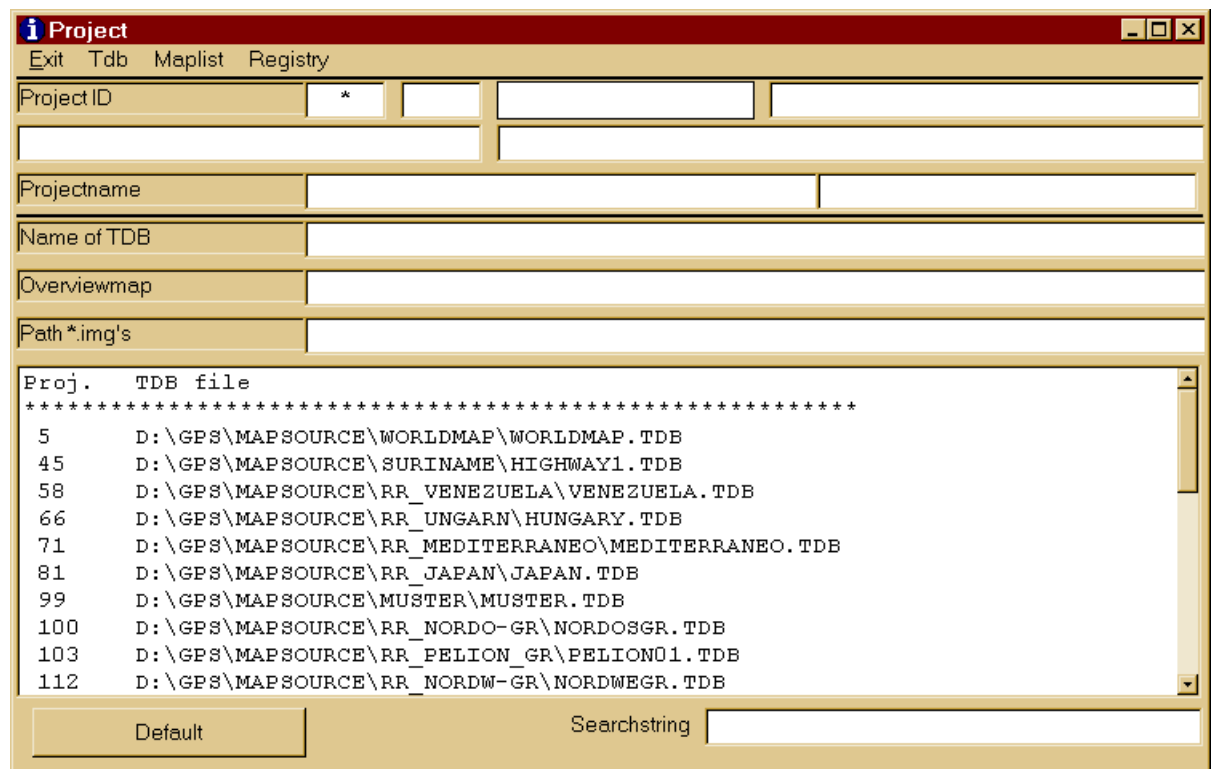


The "**116**" in the file name of the ZIP file show you the default project number in the TDB file.

While registering the project you can change this number (this is necessary if this number is used on your system by another project).

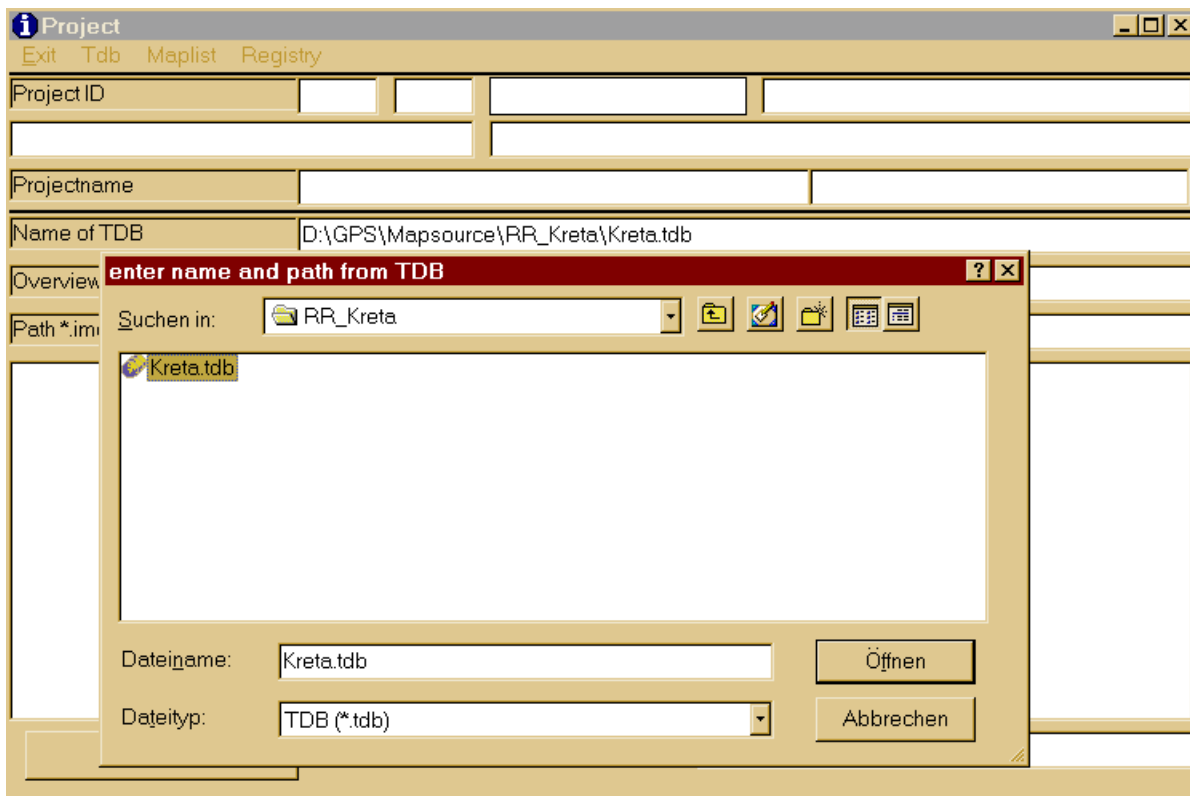
Note: To see all your Mapsource projects (only the "old" without routing), start Mapdekod, open the Project menu and press ENTER.

Possible result:

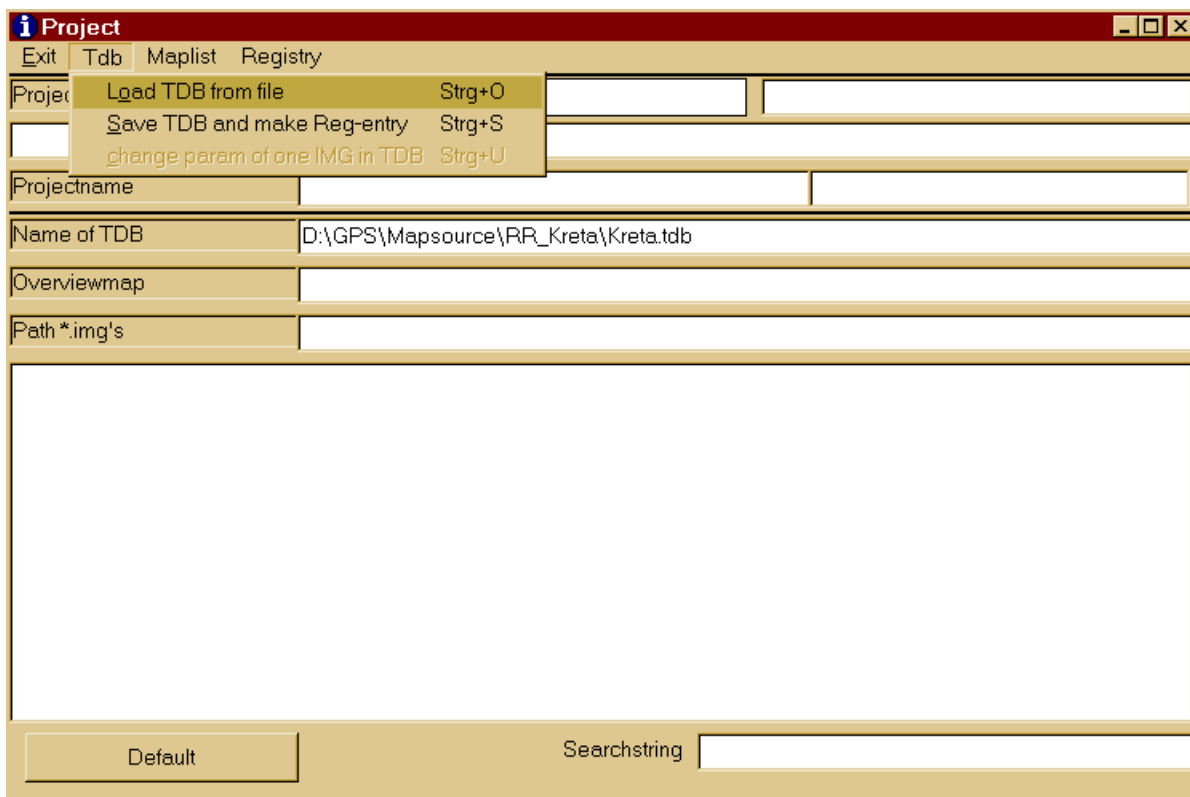


2.) Open the Project menu in Mapdekode and load the existing TDB file.

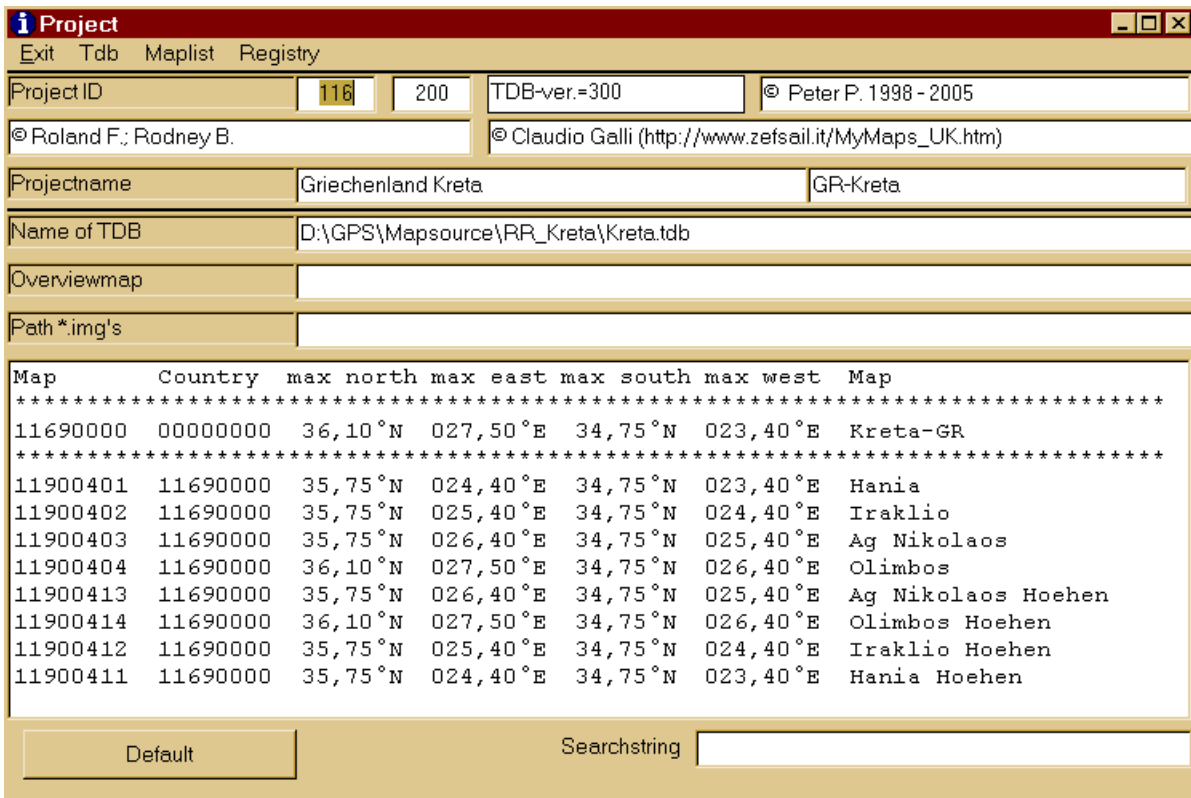
You can enter the name by hand, or double click in the **TDB** field. This open the file dialog.



Load the TDB (e.g. press [CTRL]+O)



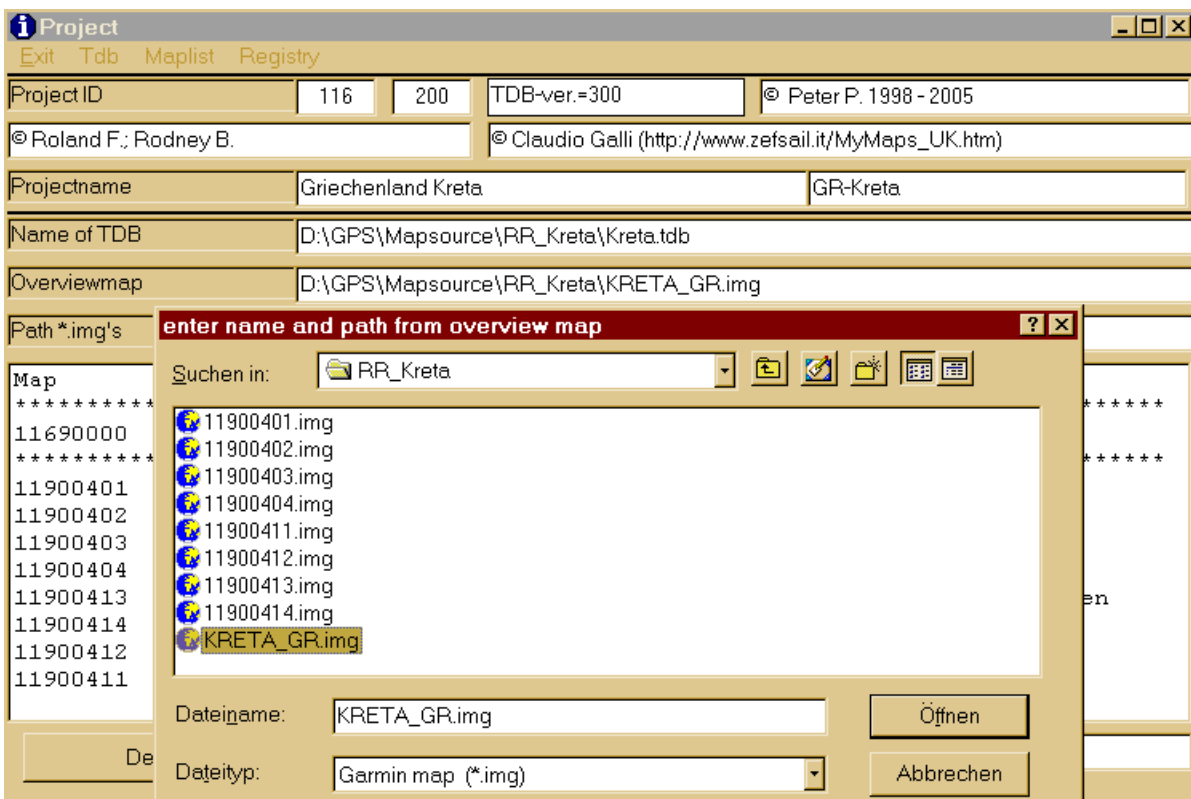
Then you see the project informations.



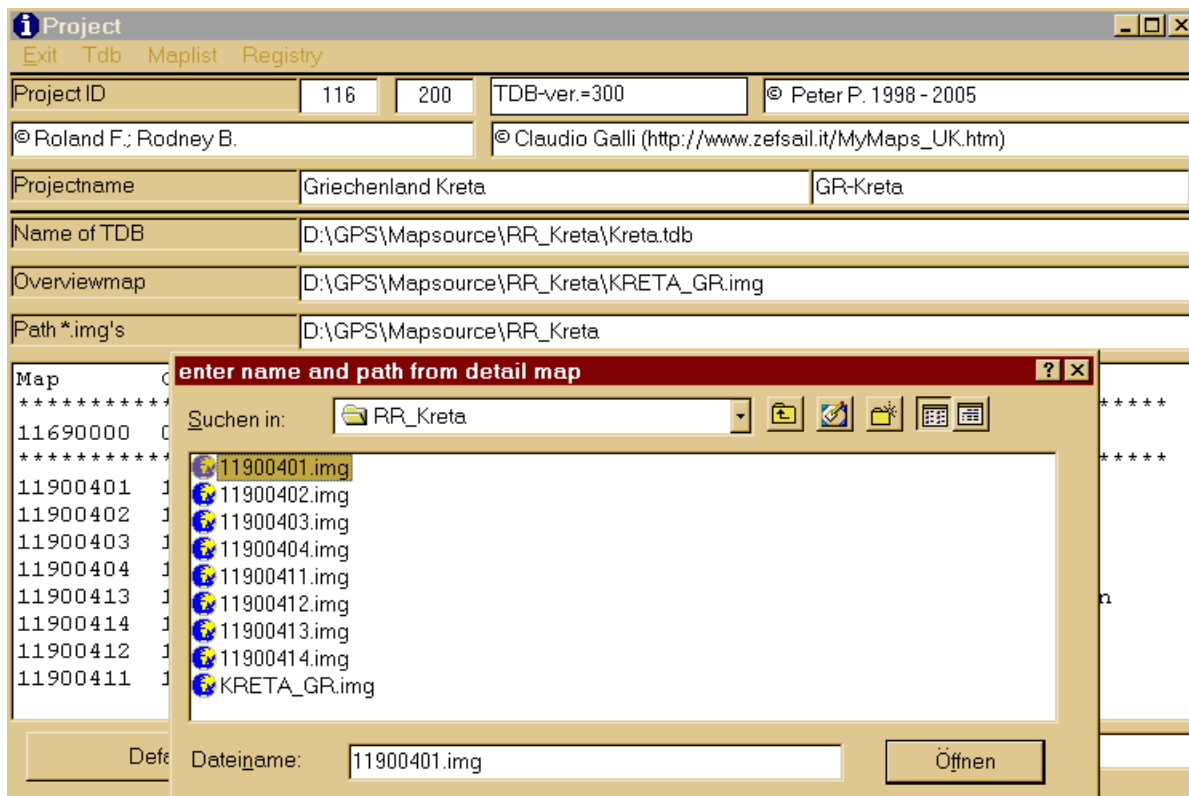
In the list, down in the window, you must see all the detail maps!
 At this time you can change the project number to a free value if necessary.

3.) Now you must add the name and path of the general (or overview) map and the path of the detail map folder.

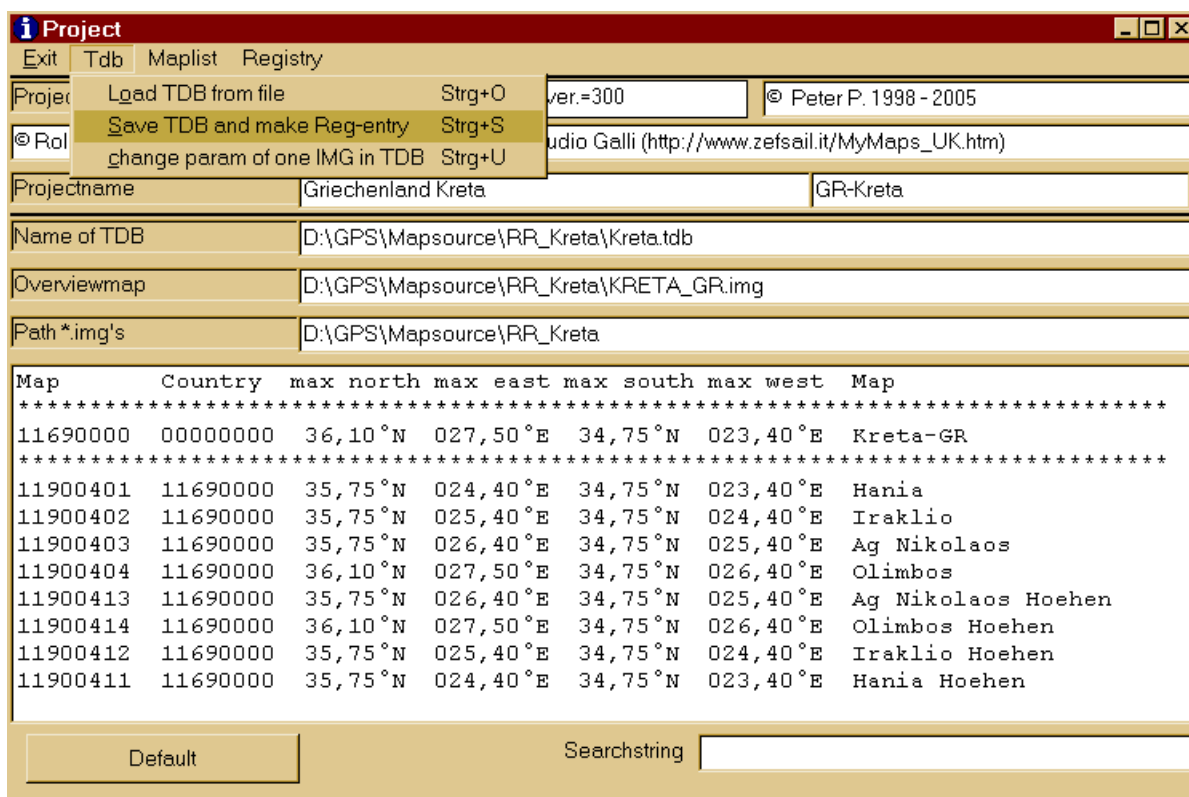
You can enter the name by hand, or double click in the **Overview map** field. This open the file dialog.



You can enter the name by hand, or double click in the **Path *.img** field. This opens the file dialog. To enter the path, select one of the *.img's.



4.) Save the TDB and register the project for Mapsource by pressing [CTRL]+S.



Answer Yes to overwrite the TDB.

Now you can select the project in Mapsource.